

# Year 12 - A Level Fine Art

## Summer Independent Learning (SIL) 2025

### ***Part 1 - Structures: Drawing, Ideas and Inspiration***

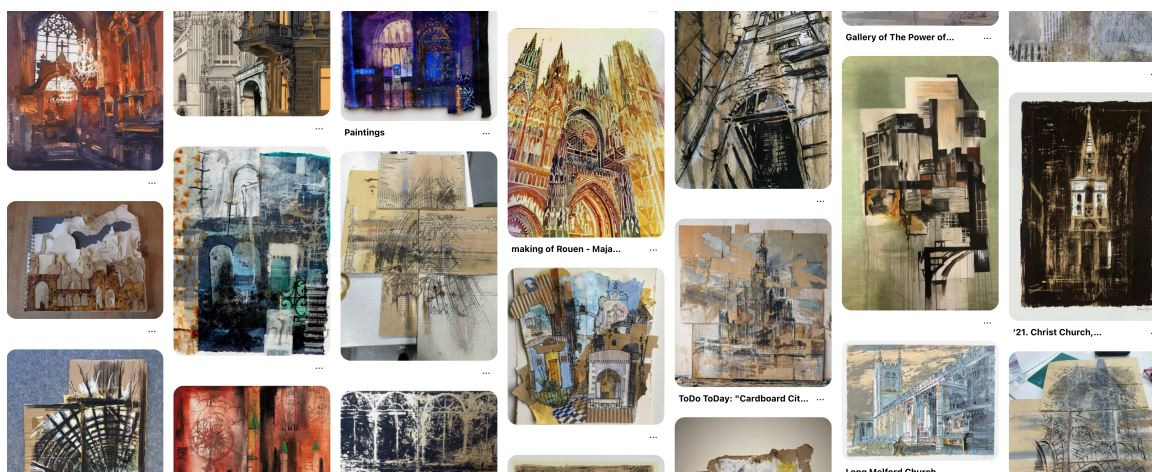
#### 1. Create a Pinterest Account

Visit <https://uk.pinterest.com> (or download the app) and create an account if you don't already have one.

#### 2. Follow the Structures Board

Follow the board named "Structures" on Pinterest:

<https://uk.pinterest.com/GeorgeNCB/year-12-structures/>



#### 3. Choose and Draw

- Select **4–6** images from the "Structures" board.
- Create a set of 4–6 drawings based on your chosen images.
- Work on paper approx. 10cm x 14cm (A6 size).
- Suggested paper types: old envelopes, newspaper, magazine cuttings, wallpapers, graph paper, brown paper.
- Use any media: pencil, biro, fine liner, pastels, felt pens, crayons.
- Explore the following drawing techniques:
  - Line
  - Tone
  - Dots or small dashes
  - Continuous line

Bring this work on your first day in an envelope/wallet labelled with your name.

## **Part 2 - Primary Photographs**

Taking your own photographs is a vital part of the A Level course.

During the summer:

- Take photos fitting the theme "**Structures**".

Ideas: buildings, stone work close-ups, architectural decay, old door handles, locks, statues, natural structures, doorways, ceilings. Bradford center is full of interesting structures, big & small.

- Aim to take at least 30 photographs & edit your favorite ones, aim for 5 edits.

- Save your images in a folder online (e.g. OneDrive, Google Drive, or email to yourself) for access at college.

*A Final Note: If you haven't studied Art before or are unsure about achieving a Grade 6, this summer work is your opportunity to demonstrate your ability and passion.*

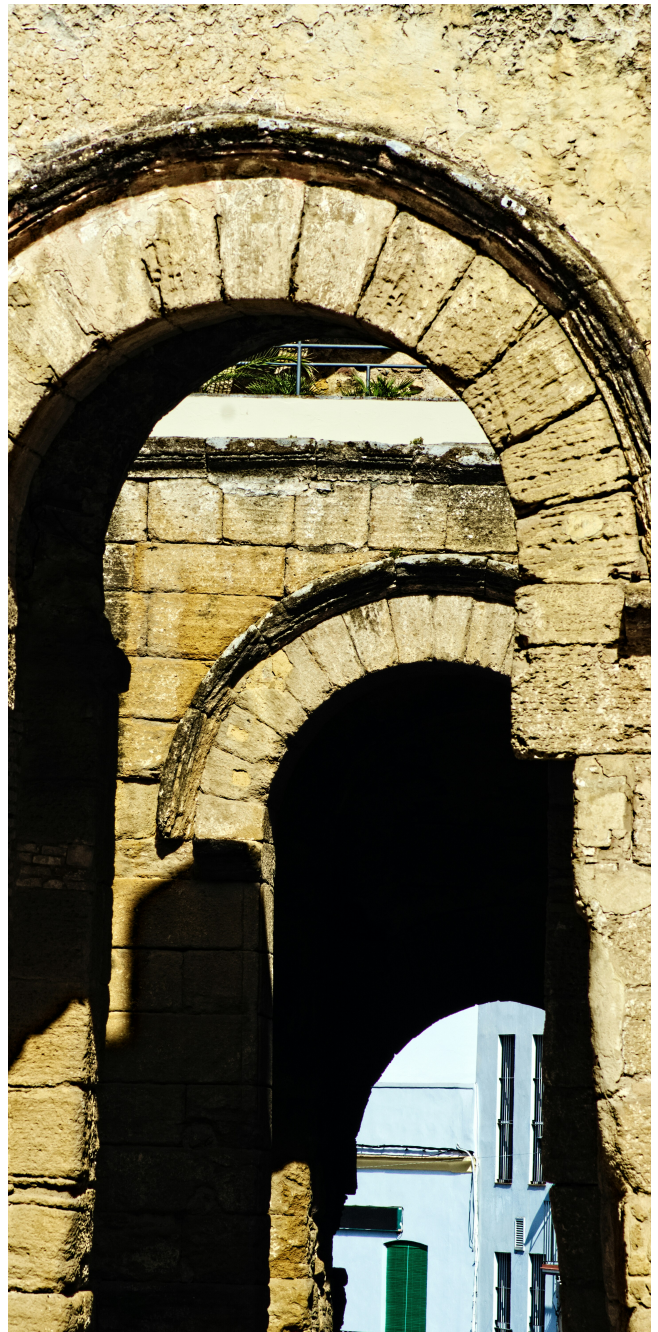
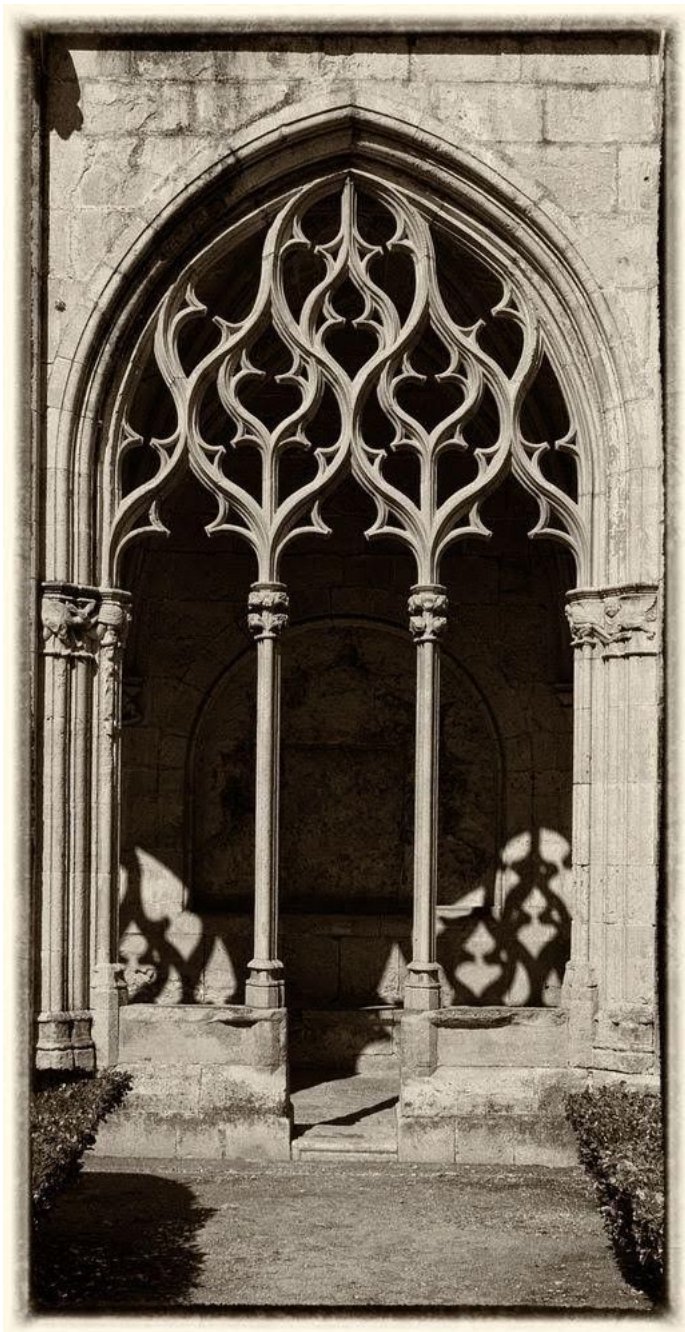




### ***Part 3 – Extended Drawing Piece***

Create a single, sustained piece of artwork:

- Spend 4–5 hours on this piece, this should be more like a ‘final piece’.
- Size: A4 or A3, or you might choose to do it a different shape or size.
- Use your strongest medium (e.g. paint, pencil, collage, etc.). You might choose to use mixed media.
- Base your work on one of the photographs found below or from one of your own photographs.









# SIL CHECKLIST:

## ***Part 1 – Drawings & Research***

- Created Pinterest account & followed the 'Structures' Board
- Pinned some structure ideas of your own
- Create 4 to 6 drawings from these images, using a range of materials and backgrounds

## **Part 2 - Photography**

- Captured a range of photographs
- Edited 5 images
- Uploaded the images to OneDrive or Google Drive

## **Part 3 – Extended Drawing**

- Completed an extended drawing piece – A4 or A3